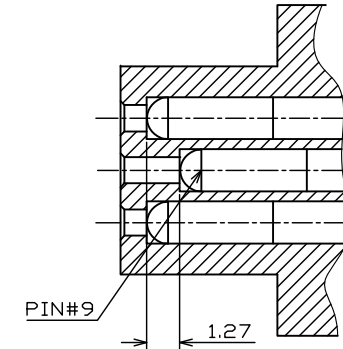
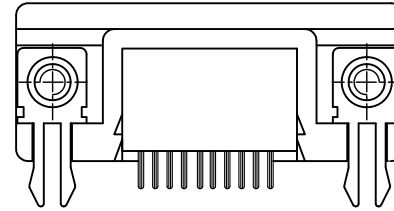
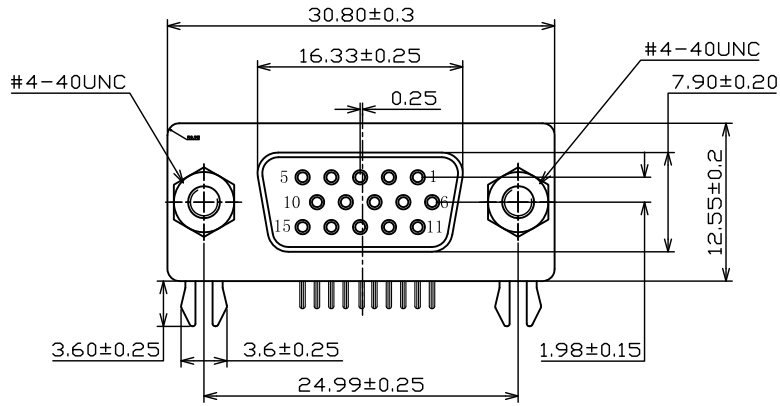
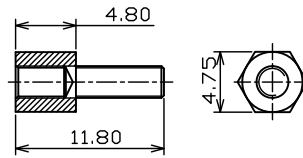
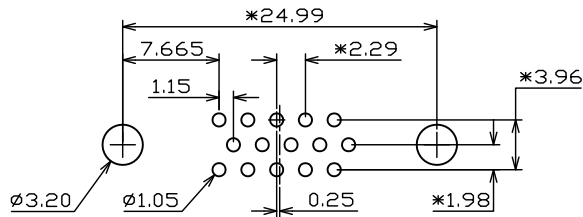
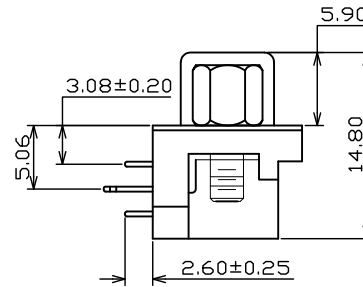
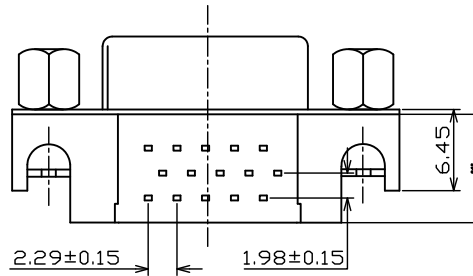


RoHS COMPLIANT



A-A
2:1



螺丝

RECOMMENDED PCB LAYOUT THICKNESS=1.6mm

TOLERANCE:±0.05

SPECIFICATIONS

- 1.1 Voltage: 250 VAC(RMS) Max.
- 1.2 Current Rating: 3 Ampere per Contact
- 1.3 Contact Resistance: 25 Milliohms Max.
- 1.4 Insulation Resistance: 5000 Megohms Min.
- 1.5 Dielectric Withstanding Voltage: 1000 VAC(RMS)
- 1.6 Total Mating Force: 6.0 Kgf Max.
- 1.7 Total Unmating Force: 1.2 Kgf Min.
- 1.8 Operating Temperature: -55° C to +85° C

ITEM	PART NAME	QTY.	MATERIAL	REMARKS
⑥	SCREW	2	SPCC	Ni
⑤	COVER	1	PBT+30%G/F	BLUE(661C)
④	FISH FORK	2	SPCC	Tin
③	SHELL	1	SPCC	Ni
②	CONTACT	15	BRASS	Tin
①	INSULATOR	1	PBT+30%G/F	BLUE(661C)

版本 千川	变更内容 MODIFICATION	日期 DATE
00	新整理	2016. 10. 23

 东莞市千川电子有限公司
DONG GUAN QIAN CHUAN ELECTRONIC CO., LTD

公差 TOLERANCE	数量 QUANTITY	制圖 DRAWING	潘红国	品名 TITLE	HDR3.08 15Pin母座 卧式DIP 叉锁4.8螺丝 黑/蓝胶		
.X ± 0.35	單位 UNIT	審核 CHECKED	TOMS	料號 PART NO.	GHR3CB1-0SPL1P		
.XX ± 0.25	比例 SCALE	核准 APPROVE	LGL	材質 MATERIAL	圖號 DRAW NO.		
.XXX ± 0.10	圖幅 SIZE	角法 PROJ.		頁數 SHEET	1 OF 1	顏色 COLOR	
X° ± 2°							
.X° ± --							