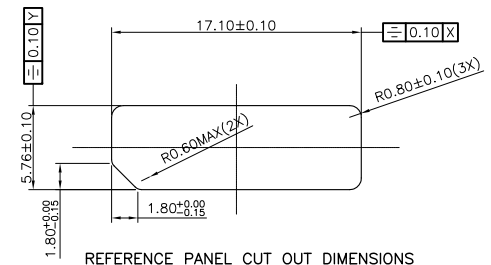
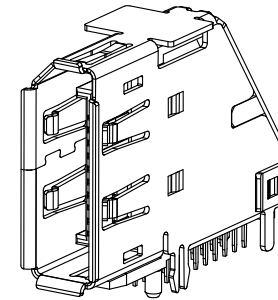


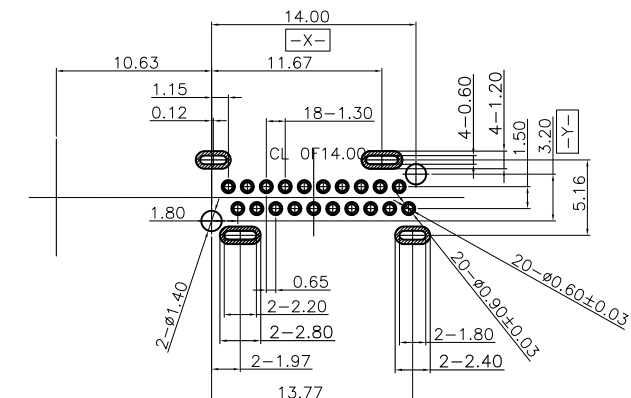
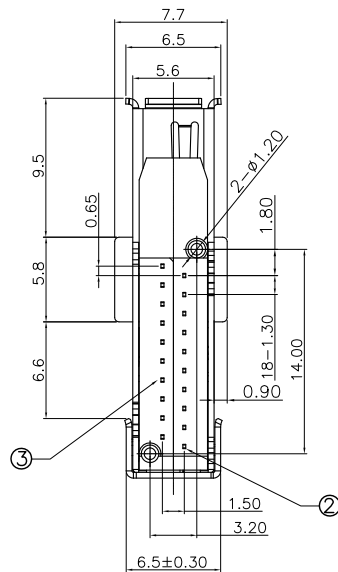
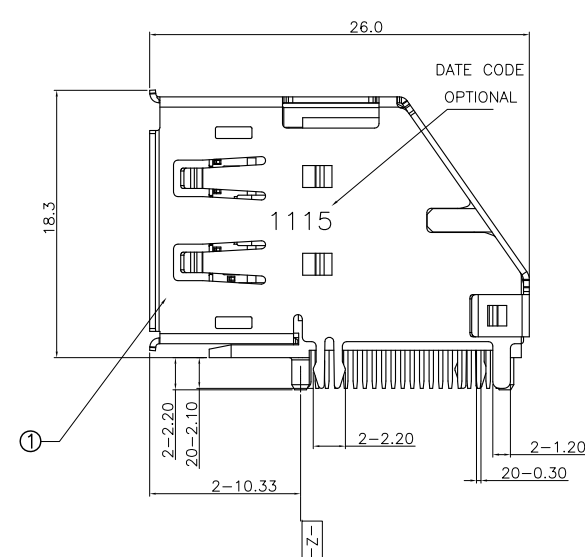
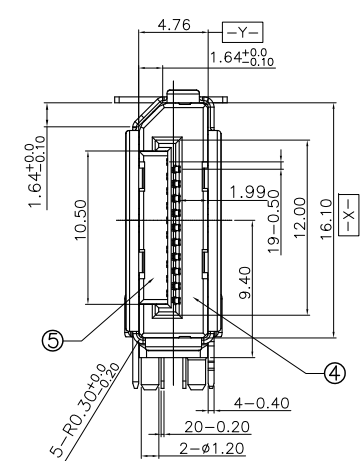
SPECIFICATIONS:

1. MECHANICAL :
  - 1.1 INSERTION FORCE :44.1 N MAX
  - 1.2 WITHDRAWAL FORCE :9.8 N MIN.  
AFTER 5,000 CYCLES MATING: 0.5kgf MIN.
2. ELECTRICAL :
  - 2.1 CONTACT CURRENT RATING: 0.5A MIN.
  - 2.2 VOLTAGE RATING :40V AC (rms)
  - 2.3 WITHSTANDING VOLTAGE: 500 VAC FOR 1 MINUTE.
  - 2.4 INSULATION RESISTANCE: 100 MEGAOHMS MIN
  - 2.5 CONTACT RESISTANCE: 30 MILLIOHMS MAX.
3. ENVIRONMENTAL :
  - 3.1 OPERATING TEMPERATURE:-25° C TO +85° C



REFERENCE PANEL CUT OUT DIMENSIONS

QTY'S	REMARK	SPECIFICATION	PART	ITEM
1	COLOR:BLACK	THERMOPLASTIC UL94V-0	2~20PIN MOLDING	⑤
1	COLOR:BLACK	THERMOPLASTIC UL94V-0	1~19PIN MOLDING	④
10	Ni 50u" MIN PLATING OVERALL Sn 100u" MIN AT SOLDER AREA Au 30u"MIN OR 15u"MIN OR G/F 1u"MIN	COPPER ALLOY	2~20PIN CONTACT	③
10	Ni 50u" MIN PLATING OVERALL Sn 100u" MIN AT SOLDER AREA Au 30u"MIN OR 15u"MIN OR G/F 1u"MIN	COPPER ALLOY	1~19PIN CONTACT	②
1	NICKEL PLATED OVER ALL, ONLY TIN PLATED OVER DIP FEET.	COPPER ALLOY	SHELL	①



RECOMMENDED P.C.B. LAYOUT(THICKNESS=1.60mm)  
TOLERANCE UNSPECIFIED ±0.05mm ALL POSITION TOL+/-0.05

版本 千川	變更內容 MODIFICATION	日期 DATE



公差 TOLERANCE	數量 QUANTITY	制圖 DRAW/IN	Toms	品名 TITLE	DP 20Pin 母座 側立式DIP 有柱 有卷邊 四腳插板
.X ± 0.35	單位 UNIT	審核 CHECKED	LJ	料號 PART NO.	QDPFEB1-GFBN1P2
.XX ± 0.25	比例 SCALE	核准 APPROVE	LGL	材質 MATERIAL	
.XXX ± 0.15	圖幅 SIZE	角法 PROJ.	⊕	頁數 SHEET	1 OF 2
X° ± 3°					顏色 COLOR
.X° ± 1.5°					