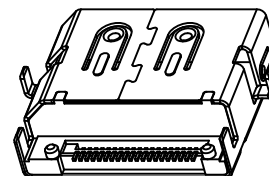
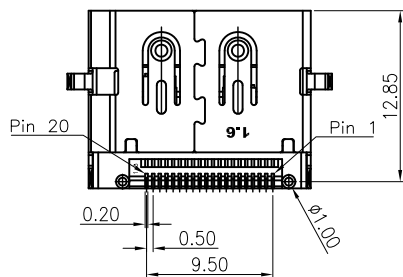
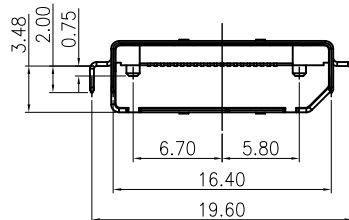
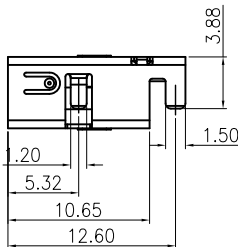
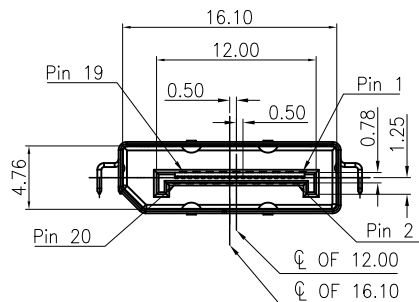


RECOMMENDED PCB LAYOUT
(THICKNESS=1.60±0.05mm)



NOTE:

A. MATERIAL:

1. Housing: LCP(HF) UL94V-0 Black
2. Contact: Copper Alloy
3. Shell: Steel

B. PLATING:

1. Contact: Contact Area Gold Plated
Solder Area Sn Plated
Under Plated Nickel
2. Shell: Nickel Plated

C. SPECIFICATION:

1. Current: 0.5A
2. Voltage: 40V RMS
3. Withstanding Voltage: 500V AC
4. Contact Resistance: $\Delta R=30 \text{ m}\Omega$ max. (Contact)
 $\Delta R=50 \text{ m}\Omega$ max. (Shell)
5. Insulation Resistance: 100 M Ω min.
6. Temperature Range: -20°C to +85°C
7. Mating And Unmating Force:
 - 7.1 Mating Force: 4.5Kgf(44.1N)Max.
 - 7.2 Unmating Force: 1.0Kgf~4.0Kgf(9.8N~39.2N)
8. Durability: 10000 Cycles

版本	變更內容	日期
千川	MODIFICATION	DATE



東莞市千川电子有限公司
DONG GUAN QIAN CHUAN ELECTRONIC CO., LTD

公差	數量	制圖	Toms	品名	DP 20Pin 母座 沉板式SMT 无卷边 四脚插板 1.6PCB置中		
TOLERANCE	QUANTITY	DRAW IN		TITLE			
.X ± 0.35	單位	審核	LJ	料號	QDPFAE1-GFSNOR7		
.XX ± 0.25	mm	CHECKED		PART NO.			
.XXX ± 0.15	比例	核准	LGL	材質			
X° ± 3°	SCALE	APPROVE		MATERIAL			
.X° ± 1.5°	圖幅	角法	PROJ.	頁數	1 OF 2	顏色	
	SIZE			SHEET		COLOR	