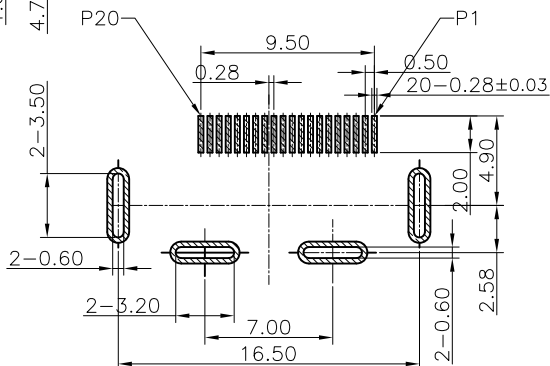
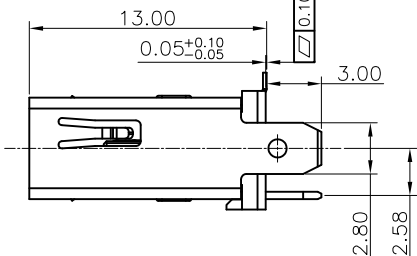
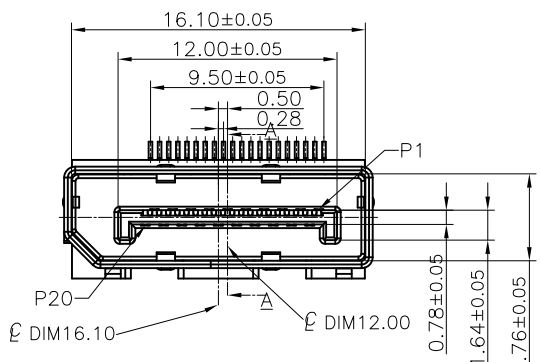
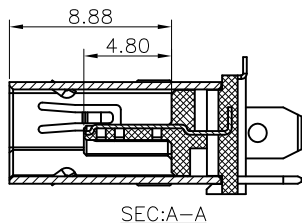
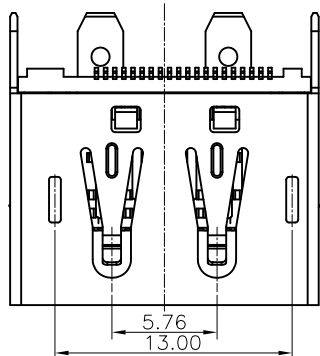
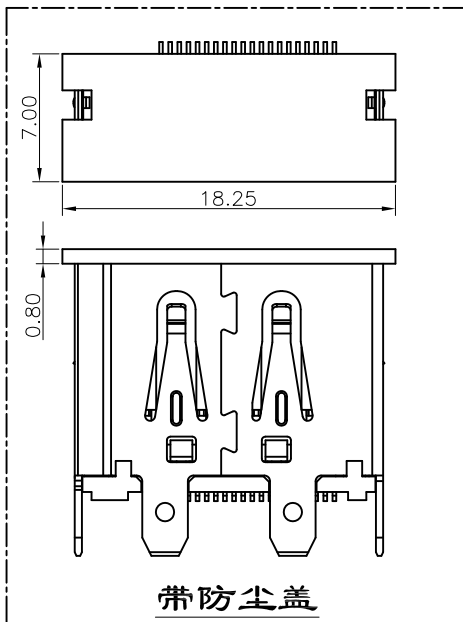


SPECIFICATIONS:

1. MECHANICAL :
 - 1.1 INSERTION FORCE :44.1 N MAX
 - 1.2 WITHDRAWAL FORCE :9.8 N MIN.
AFTER 5,000 CYCLES MATING: 0.5kgf MIN.
2. ELECTRICAL :
 - 2.1 CONTACT CURRENT RATING: 0.5A MIN.
 - 2.2 VOLTAGE RATING :40V AC (rms)
 - 2.3 WITHSTANDING VOLTAGE: 500 VAC FOR 1 MINUTE.
 - 2.4 INSULATION RESISTANCE: 100 MEGAOHMS MIN
 - 2.5 CONTACT RESISTANCE: 30 MILLIOHMS MAX.
3. ENVIRONMENTAL :
 - 3.1 OPERATING TEMPERATURE:-25° C TO +85° C




RECOMMENDED P. C. B. LAYOUT (THICKNESS=L.60mm)
TOLERANCE UNSPECIFIED ± 0.05mm



ITEM	QTY'S	PART	SPECIFICATION
4	1	DUST COVER	LCP BLACK UL94V-0
3	20	CONTACT	COPPER ALLOY; GOLD PLATED OVER NICKEL ON CONTACT AREA AND 100µ" MIN. TIN PLATED OVER NICKEL ON SOLDER TAILS
2	1	HOUSING	LCP BLACK UL94V-0
1	1	SHELL	SPCC/COPPER ALLOY NICKEL PLATED

版本 千川	變更內容 MODIFICATION	日期 DATE

 东莞市千川电子有限公司
DONG GUAN QIAN CHUAN ELECTRONIC CO., LTD

公差 TOLERANCE	數量 QUANTITY	制圖 DRAW/IN	Toms	品名 TITLE	DP 20Pin 母座 立式SMT 无卷边 四脚插板 H=13.00
.X ± 0.35	單位 UNIT	審核 CHECKED	LJ	料號 PART NO.	QDPFV13-GFSNOR
.XX ± 0.25	比例 SCALE	核准 APPROVE	LGL	材質 MATERIAL	
.XXX ± 0.15	圖幅 SIZE	角法 PROJ.		頁數 SHEET	1 OF 1
X° ± 3°				顏色 COLOR	
.X° ± 1.5°					